

Govt. of India
Ministry of Human Resource Development
Dept. of School Education and Literacy
Mid-Day Meal Division

PAB-MDM meeting
to consider and approve AWP&B 2020-21

(Date of the meeting: 09.06.2020)



APPRAISAL NOTE

UTTARAKHAND

INDEX

Sl. No.	CHAPTER	Page no.
Overview	Pre-requisite steps for submission of AWP&B	2-3
	Main Issues from Appraisal	
	Best practices	
Part-A	General Information	4-7
Part-B	Review of performance during 2019-20	8-21
Part-C	Recommendations of Appraisal team and quantification of variables for central assistance during 2020-21	22-27

a. Overview: Status on Pre requisite steps required for submission of AWP&B, 2020-21

Pre-requisite step	Status
e-transfer of funds to all schools	Yes
100% payment of cost of food grains made to FCI	Yes
100% payment of honorarium to cook-cum-helpers through e-transfer to their bank accounts.	Yes
Annual and Monthly data entry for the FY 2019-20 completed.	Yes
Automated Monitoring system operationalized for 100% schools	No
Emergency Medical Plan is in place	Yes
Action taken note on commitments given by the State Govt. during PAB Meeting of 2019-20	Yes
Separate and detailed MME plan	Yes
Action taken on complaints	No (Under Enquiry)

b. Main Issues from appraisal:

- I. Delay of 2 months in release of funds from State to School.
- II. Less coverage of 10 working days.
- III. Construction of 171 Kitchen cum Stores are yet to be started. As discussed in last PAB, Funds in respect of these 171 Kitchen cum stores (i.e. Central share of Rs. 220.40 Lakhs + Bank Interest) are yet to be surrendered by the State Government.
- IV. Less release of Minimum mandatory State share in Cooking cost.
- V. Very less DLC meeting conducted in districts (one meeting per month per district is mandatory).
- VI. Only 2303 (14%) Schools are having School Nutrition Gardens (SNG).
- VII. No training provided to Cook cum Helpers.
- VIII. No Block level setup is available to implement and monitor the scheme at School level.

C. Best Practices:

- I. State Govt. provides Rs. 1000/- per month over and above the Minimum mandatory state share for Honorarium to Cook cum Helpers from State resources,
- II. State Govt. provides Annual incentive to Cook cum Helpers from State resources,
- III. State Govt. provides Uniform to Cook cum Helpers from State resources,
- IV. State Govt. provides Atirikt Poshan (Banana, Egg, Gur Papri) once in a week to all the children from State resources,
- V. Food sample testing conducted in 60 Schools of districts of Dehradun & Haridwar.

Part-A : General Information

Introduction:

National Programme of Nutritional support of Primary Education (NP-NSPE) popularly known as the Mid-day-meal (MDM) scheme was formally launched on the 15th August 1995. The scheme envisaged every child in primary school to be provided cooked meal during the school hours with a maximum content of 450 calories and 12 gm of protein each day of school. Earlier state was the part of Uttar Pradesh before 8 Nov. 2000. In Uttar Pradesh dry ration distribution pattern was observed for Mid-day-meal scheme. Children enrolled in primary schools to receive food grain to carry it home every month in the presence of their parents. Only rice or wheat was provided to the children. It was not felt sufficient from nutritional point of view.

With these efforts there was a slight improvement in enrolment but retention of these children in scheme is still remaining a challenge to the department and government. According to Health check-up drive under DPEP-III and SSA, it was noticed that about 50% children enrolled in primary schools are anaemic. Percentage of girls child is little higher. This shows that the pattern of providing MDM is not up to the satisfaction of the children as far the enrolment and retention are concerned.

While deciding a PIL the honourable Supreme Court directed to the GOI through all states and UTs to provide cooked nutritious meal to all children enrolled in primary school during school hours. Following the order of the honourable Apex Court Govt of Uttarakhand started the scheme for the 1st time in Sahaspur block of district Dehradun in the year 2001-02. The impact was promising enough to extend this scheme to all 13 districts of the state. This was followed by implementing the scheme in 26 blocks of all the districts (2 blocks from each district) as the second phase of the scheme in the year 2002-03. The experiment was appreciated and hailed from all the quarters of the state so much so that now it has become the vehicle for attainment of the goal of universalization of education at primary level. The Govt of Uttarakhand through Department of Education implemented the scheme in all primary schools, aided primary schools, EGS/AIE centres in the year 2003-04. The scheme has been a 100% success in terms of coverage at primary level.

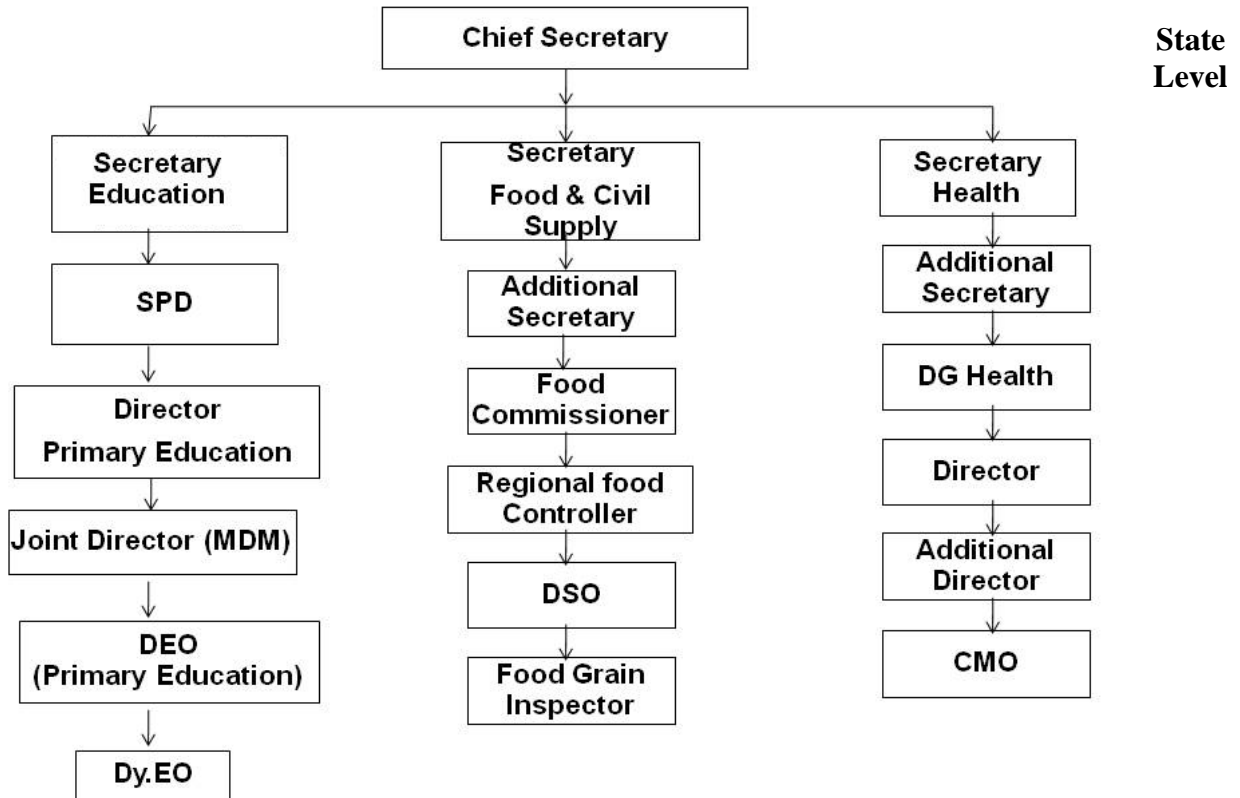
Encouraged with the success the MDM scheme has also been extended in Upper Primary Schools in Educationally Backward Blocks (EBB) with effect from 01 January 2008 and further extended in all Upper Primary Schools of the state from the year 01 April 2008.

The direction made by Principal Secretary on the scheme are most focused on sound structural organization, cleanliness, management for food supply, quality of food grain, availability of funds and fuel supply, cooking process, inter departmental coordination through District Magistrate and responsibilities of the officials of concerned programme. A full fledged committee i.e. School Management Committee is formed separately at school/village level to implement the scheme.

1.1 Management Structure:

At state level Department of Education is responsible for implementation of the scheme. Department of food and civil supply is responsible for providing food grains. At district level District Magistrate is deputed as a nodal officer. Under the guidance of District Magistrate, District Education Officer (Primary Education), and District Supply Officer (DSO) manages the mid day meal programme. At block level Dy. Education Officer is acting as nodal officer. Head Master and school management committee (SMC) is responsible for implementing the scheme at school level. The State Project Director (SPD) of "Uttarakhand council of Education for all" who is responsible for the overall monitoring and management of the programme.

There are following dedicated staffs at various levels to manage, monitor and implement the programme:



Post	Sanctioned Post	Filled	Vacant	Remark
State Project Director	1	1	0	Nodal Officer in State
Joint Director	1	1	0	Departmental
Field Investigator	2	2	0	Filled by redeployment
Stenographer	1	0	1	To be filled by redeployment
Computer Operator	1	0	1	To be filled by redeployment
MIS Coordinator	1	1	0	By Outsourcing
Computer Operator	1	1	0	By Outsourcing
Coordinator	2	1	1	By Outsourcing
Assistant Accountant	1	1	0	By Outsourcing
Auditor	1	0	1	To be filled by Outsourcing
Peon	2	2	0	By Outsourcing

District Level

Post	Sanctioned Post	Filled	Vacant	Remark
DEO (Primary Education)	13	13	0	Nodal Officer in District
Coordinator	13	13	0	By Outsourcing
MIS Coordinator	13	11	2	By Outsourcing
Peon	13	13	0	By Outsourcing

Block Level

Post	Sanctioned Post	Filled	Vacant	Remark
Dy. Block Education Officer	95	95	00	Nodal Officer in Block
Official Staff at Block level offices	95	95	00	Honorarium of Rs 500 is given for additional work for MDM

1.3 Process of Plan Formulation:

A bottom up approach is taken for plan formulation. The school sends the information to block offices where the information consolidates/scrutinizes and submitted to district level. At district level the plan was prepared according to block level information and submitted to state. The proposal received from the district is finalized at state level as per norms and guidelines prescribed by Government of India and sent the plan to "State Level Steering Cum Monitoring Committee" for approval; afterwards the State Government forwards the plan to Government of India.

The plan is based on the MDM-MIS data. Different level meetings were organised before preparation of AWP&B.

1. Basic Information: (FY - 2019-20)

S. No.	INDICATORS	STATUS		
		PRY	U PRY	TOTAL
1. No. of Institutions				
i)	Existing Institutions	12893	5452	18345
ii)	Covered during the year	11800	5245	17045
2. No. of Children				
i)	Approved by MDM-PAB	347250	247982	595232
ii)	Enrollment as on 30.9.2019	404890	284416	689306
ii)	Average No. of children availed MDM during First 3 QTR for FY - 2019-20 vis-à-vis Enrollment	328421	229322	557743
		81%	81%	81%
3. Coverage of children against Enrollment as per Quarterly Progress Report (QPR)				
i)	Average no. of children availed MDM as per QPR-1	319473	223624	543097
		79%	79%	79%
ii)	Average no. of children availed MDM as per QPR-2	339326	239000	578326
		84%	84%	84%
iii)	Average no. of children availed MDM as per QPR-3	332954	234338	567292
		82%	82%	82%
4. No. of Working Days				
i)	Approved for 2019-20 upto 3rd. QTR.	181	181	
ii)	Covered during 2019-20 upto 3rd QTR	171	171	
5. Per unit cooking cost Per child per day (in Rs.)				
AVERAGE UNIT COOKING COST PCPD (Central Share)		4.03	6.04	
State's contributions in cooking cost per child per day (Minimum Mandatory)		0.45	0.67	
Total COOKING COST PCPD		4.48	6.71	
Additional Contribution of State in cooking cost per child per day		--	--	

Part-B :Review of Performance in 2019-20(01.04.19 to 31.12.2019)

2. Based on the information provided by the State Government in its AWP&B 2020-21, the performance during 2019-20 (01.04.19 to 31.12.2019) was reviewed. The major issues in implementation during 2019-20 are summarized as under: -

2.0 Coverage of Institutions

Coverage in terms of No. of institutions.

Difference between Existing Vs No. of institutions covered (Achievement) –

i) PRIMARY

The number of existing institutions	= 12893
Number of institutions covered during 2019-20	= 11800 (92.%)

ii) UPPER PRIMARY & UPPER PRIMARY WITH PRIMARY

The number of existing institutions	= 5452
Number of institutions covered during 2019-20	= 5245 (96%)

2.1 Average number of children availed MDM vis-à-vis enrolment

2.1.1 a) Primary - Coverage in terms of No. of children. Difference between Enrolment vs. Average No. of Children Availed MDM (Achievement) (Refer Table 2.5 of the Analysis Sheet).

Total Enrolment as on 30.09.2019	= 404890
Average number of children availed MDM during 2019-20	= 328421 (81%)

b) Upper Primary: Coverage in terms of No. of children. Difference between Enrolment vs Average No. of Children Availed MDM (Achievement) – UPPER PRIMARY (Refer Table 2.6 of the Analysis Sheet).

Total Enrolment as on 30.09.2019	= 284416
Average number of children availed MDM during 2019-20	=229322 (81%)

2.1.2 Average number of children availed MDM vis-à-vis PAB-MDM approval :

a) **Primary : Coverage in terms of No. of children. Difference between PAB Approval (Target) vs. Average No. of Children Availing MDM (Achievement) (Refer Table 2.3 of the Analysis Sheet).**

The number of children approved by MDM PAB for 2019-20 = 347250
Average number of children availed MDM during 2019-20 = 328421 (95%)

b) **Upper Primary: Coverage in terms of No. of children. Difference between PAB Approval (Target) Vs Average No. of Children Availing MDM (Achievement) (Refer Table 2.4 of the Analysis Sheet).**

The number of children approved by MDM PAB for 2019-20 =247982
Average number of children availed MDM during 2019-20 = 229322 (92%)

2.1.3 No. of Meals: Difference between No. of meal to be served (Target) Vs. No. of meals Served (Achievement) - PY+U PY (Refer Table 1.3 of the Analysis Sheet).

The number of meals to be served during 2019-20 (Upto 3rd QTR) = 107736992
The number of meals served during 2019-20 (Upto 3rd QTR) = 95374133 (89%)

2.2 FOODGRAINS

2.2.1 Level of Opening Balance as on 01.04.19: (Refer Table 3.2.1of the Analysis Sheet).

The State has 376.71 MTs (2%) of food-grains as opening balance against the total allocation of 17333.28 MTs for 2019-20 as on 1.4.2019.

2.2.2 Level of unspent balance as on 31.12.19: (Refer Table 3.2.2 of the Analysis Sheet).

The State level closing balance as on 31.12.2019 was 2388.77 MTs (14%) against the total allocation of 17333.28 MTs. In all the Districts, the unspent Balance of food grains is available ranging from 7% to 27%.

2.2.3 Availability of Food grains: (01.04.19 to 31.12.19) : (Refer Table 3.4 of the Analysis sheet)

The districts should have availability of at least 85% of the food grains allocation. State level availability as on 31.12.2019 was 13886.88 MTs (80%) of the total allocation.

2.2.4 Utilization of food grains: (Refer Table 3.6 of the Analysis sheet)

An analysis of the utilization of food grains during the first three quarters of 2019-20 shows that State has utilized 11498.11 MTs (66%) of the allocated food grains. It should have been at least 75%. The State of Uttarakhand is requested to look into the issue of low utilization of food grains.

2.2.5 Payment of cost of foodgrains to FCI: (Refer Table 3.7 of the Analysis sheet)

The FCI has submitted bills for Rs.413.44 Lacs during 1.4.2019 to 31.12.2019 towards cost of food grains. The State has made payment for Rs. 383.42 (93%) to the FCI.. State Govt. of Uttarakhand has cleared the outstanding of FCI.

2.3 COOKING COST (PRIMARY + UPPER PRIMARY)

2.3.1 Level of Opening balance as on 01.04.19: (Refer Table 4.2.1 of the Analysis Sheet)

The State Govt. of Uttarakhand had reported Rs 1216.56 Lacs (16%) as opening balance at the beginning of the financial year 2019-20. The Allocation of Cooking cost were Rs.7759.34 Lacs for the State of Uttarakhand for FY-2019-20.

2.3.2 Level of closing balance as on 31.12.19: (Refer Table 4.2.2 of the Analysis Sheet)

The State Govt. had reported that Closing Balance of Rs. 2339.60 Lacs (70% of allocation) towards cooking cost as on 31.12.2019. .

2.3.3 Utilization of Cooking cost: (Refer Table 4.6 of the Analysis Sheet)

The districts should have utilized 75% of the allocation of cooking cost. State level utilization was Rs. 5111.86 Lacs (66% against allocation). At the district level the utilization ranges between 64% to 70%.

Upto the 3rd QTR the utilization should have been 75% at least. In the most of the districts utilization has been reported less than 75%. State of Uttarakhand is requested to look into the issue of low utilization of cooking cost.

2.4 Reconciliation of utilization and performance during 2019-20 (1.4.19 to 31.12.19)

2.4.1 Mismatch, if any, in utilization of Food grains vis-à-vis cooking cost: (Refer Table – 5.1 of Analysis Sheet)

Sr. No.	District	% utilisation of foodgrains	% utilisation of Cooking cost	Mis-match in % points
1	Almora	64%	64%	0
2	Bageshwar	67%	67%	0
3	Chamoli	66%	65%	0
4	Champawat	69%	68%	-1
5	Dehradun	66%	65%	0
6	Haridwar	66%	65%	0
7	Nainital	69%	69%	-1
8	Pauri	64%	64%	0
9	Pithoragarh	68%	67%	-1
10	Rudraprayag	70%	69%	0
11	Tehri	65%	65%	0
12	USNagar	65%	65%	0
13	Uttarkashi	70%	70%	-1
Total		66%	66%	0

2.5 Cook-Cum-Helper (PRIMARY + UPPER PRIMARY):

PAB-MDM has approved 29187 cook-cum-helpers to be engaged during 2019-20 in the State. The State Govt. has engaged all 25813 cook-cum-helpers. The State Govt. has utilized Rs. 4174.63 Lacs (70%) against the allocated funds for payment of honorarium to cook cum helper upto 3rd QTR of the year.

The State Govt. has proposed to retain 29187 Cook-Cum-Helpers for FY - 2020-21.

2.6 Utilization of MME(Refer Table – 7.3 of Analysis Sheet)

Against the allocation of Rs. 220.19 Lakh as Central Assistance towards MME funds, the State govt. has utilized only Rs.172.24 Lakh (60%) upto the 3rd QTR of the year. The utilization of MME should

have been at least 75%. State Govt. has not implemented State Project Management Unit (SPMU) with Team of Expert in every dimension of scheme i.e. Finance, Plan & Monitoring, Nutrition, IT/MIS/AMS, Capacity Building, Media & Planning etc. Still, No Manpower exist at Block level. State Govt. is advised to implement the above mentioned SPMU & Person should be posted at Block level immediately before 30 June 2020. Further, it is requested to State Govt. to look into the issue of low utilization of MME.

2.7 Utilization of Transportation Assistance(Refer Table – 8.3 of Analysis Sheet)

Against the allocation of Rs. 436.19 lakh as Central Assistance towards funds for Transportation Assistance, the State Govt. has utilized Rs. 266.10 lakh (74% of Total available funds of TS for rs. 426.71 Lakh). State Govt. is advised to instruct to Transporter for time bound submission of Transportation Bills before 10th of next month of delivery of food grains and the same should be cleared by District Administration / State Govt. before 20th.of that month itself.

2.8 Construction of Kitchen-cum-Stores (KS) (Reference Table -9.1.1 of Analysis Sheet)

Central Assistance of Rs. 14999.88 Lakh has been released for construction of 15933 Kitchen-cum-Stores. As on 31.12.2019, construction has been completed for 15681 Kitchen-cum-Sores and construction work is in progress for 81 Kitchen-cum-Sores. The State Govt. has not started any construction work for 171 Kitchen-cum-Stores. During PAB –MDM meeting State Govt. committed to complete by 31st December, 2019. **State Govt. has assured to complete this 16 Kitchen cum stores before 30-06-2020 and Balance 155 Kitchen cum Stores fund will be requested to Govt. of India to be adjusted as surrender in further release of funds for Repare of Kitchen cum Stores.**

The State Govt. has not proposed to any repair of Kitchen cum stores for FY - 2020-21.

2.9 Procurement of Kitchen devices (Reference Table -9.2.2 of Analysis sheet)

Central Assistance of Rs. 909.95 lakh has been released towards procurement of 18199 units of kitchen devices during 2006-07 to 2019-20. The State Govt. has reported that all 18199 units of kitchen devices have been procured.

The State Govt. has submitted the proposal for 68 New Kitchen devices for Madrasa for FY-2020-21. The total amount for 68 Kitchen Devices is Rs. 11.15 Lakh out of which the Central Share required for this is Rs. 10.035 lakh and State Govt. Share is Rs. 1.115 Lakh.

2.10 Replacement of Kitchen Devices (Reference Table -9.2.1 of Analysis sheet)

Central Assistance of Rs. 864.15 lakh has been released towards replacement of 18199 units of Kitchen Devices during 2012-13 to 2019-20. The State Govt. has reported that all 17283 units of Kitchen Devices have been replaced.

State Govt. has submitted the proposal for replacement of 4228 Kitchen Devices against Total sanctioned 5677 Kitchen devices in the year 2014-15. The total amount for 4228 Kitchen Devices is Rs. 472.10 Lakh out of which the Central Share required for this is Rs. 424.89 lakh and State Govt. Share is Rs. 47.21 Lakh.

3. Data Entry Status on the MIS Web Portal

In order to smooth function of MDMS, Ministry of HRD, MDM Division has developed web based monitoring system i.e. Web based MIS in collaboration with NIC. In this web portal State/District/Block users have to make Annual and Monthly data entry into the web portal through online. The State should monitor data entry activities to be made timely manner by District/Block users into the portal. The Annual and monthly data entry status as on December, 2019 of the State is given below:-

3.1 Annual Data Entry:

The district wise annual data entry status is given below:-

Report Generated on : Monday, 16 March 2020 05:36 PM

School Annual Data Entry Status Report For Financial Year : 2019 - 2020					
State : UTTARAKHAND					
S. No.	District	Total Schools	Completed Schools	Completed Percentage	Pending Schools
1	ALMORA	1762	1762	[100 %]	
2	BAGESHWAR	791	791	[100 %]	
3	CHAMOLI	1356	1356	[100 %]	
4	CHAMPAWAT	682	682	[100 %]	
5	DEHRADUN	1390	1390	[100 %]	
6	HARDWAR	1073	1073	[100 %]	
7	NAINITAL	1397	1397	[100 %]	
8	PAURI GARHWAL	2093	2093	[100 %]	
9	PITHORAGARH	1500	1500	[100 %]	
10	RUDRAPRAYAG	797	797	[100 %]	

11	TEHRI GARHWAL	1905	1905	[100 %]	
12	UDHAM SINGH NAGAR	1276	1276	[100 %]	
13	UTTARKASHI	1023	1023	[100 %]	
	Total	17045	17045	[100 %]	

State Govt. of Uttarakhand has completed 100% Annual data entry on the web portal for 2019-20. MHRD Appreciate the efforts of State Govt. of Uttarakhand initiative for time bound completion of Annual Data Entry for FY-2019-20.

3.2 Monthly Data Entry

Report Generated on : Monday, 16 March 2020 05:34 PM

School Monthly Data Entry Status Report For Financial Year : 2019 - 2020														
State : UTTARAKHAND														
S.No.	District	Total Schools	Freeze Schools	April	May	June	July	August	September	October	November	December	Average	% Average
1	ALMORA	1762	1762	1762	1762	1762	1762	1762	1762	1762	1762	1762	1762	100%
2	BAGESHWAR	791	791	791	791	791	791	791	791	791	791	791	791	100%
3	CHAMOLI	1356	1356	1356	1356	1356	1356	1356	1356	1356	1356	1356	1356	100%
4	CHAMPAWAT	682	682	682	682	682	682	682	682	682	682	682	682	100%
5	DEHRADUN	1390	1390	1390	1390	1390	1390	1390	1390	1390	1390	1390	1390	100%
6	HARDWAR	1073	1073	1073	1073	1073	1073	1073	1073	1073	1073	1073	1073	100%
7	NAINITAL	1397	1397	1397	1397	1397	1397	1397	1397	1397	1397	1397	1397	100%
8	PAURI GARHWAL	2093	2093	2093	2093	2093	2093	2093	2093	2093	2093	2093	2093	100%
9	PITHORAGARH	1500	1500	1500	1500	1500	1500	1500	1500	1500	1500	1500	1500	100%
10	RUDRAPRAYAG	797	797	797	797	797	797	797	797	797	797	797	797	100%
11	TEHRI GARHWAL	1905	1905	1905	1905	1905	1905	1905	1905	1905	1905	1905	1905	100%
12	UDHAM SINGH NAGAR	1276	1276	1276	1276	1276	1276	1276	1276	1276	1276	1276	1276	100%
13	UTTARKASHI	1023	1023	1023	1023	1023	1023	1023	1023	1023	1023	1023	1023	100%
	TOTAL	17045	17045	17045	17045	17045	17045	17045	17045	17045	17045	17045	17045	100%

State Govt. of Uttarakhand has completed 100% Monthly data entry on the web portal for 2019-20. MHRD Appreciate the efforts of state gov. of Uttarakhand initiative for time bound completion of Annual Data Entry for FY-2019-20.

3.3 Comparison of Data from MIS and AWP&B

COMPONENT	MIS	AWP&B
Institutions	17045	17045
Working Days	210	171

Coverage of children	546826	557743
CCH engaged	25815	25813
CCH Hon. Utilisation (Rs. in Lakhs)	5256.28	4174.63
Cooking Cost Utilisation (Rs. in Lakhs)	7707.42	5111.86
Food Grains Utilisation (in MTs)	16301.12	11498.11

Above Data reflect that there is huge Mismatch between MIS and AWP&B 2020-21 in coverage of all the components of MDMS. It is requested to the State of Uttarakhand to look into the mismatch. Ideally there should not be any mismatch of the data in the sources. There is need to serious data entry should be in time bound manner by Block Resource Person of MDMs.

3.4 Automated Monitoring System

Max. 70% schools covered under AMS upto 3rd Quarter of 2019-20. Out of 17045 Schools, Max. 11984 Schools has reported maximum between April – Dec. 2019. The less number is due to network problem in remote hilly region. Some of the HMs have been transferred or retired so the new mobile numbers have not been updated in the portal. It is suggested to State Govt. officials to instruct the HMs to update the mobile numbers in the portal at the earliest so that 100% data of the daily beneficiary is reported.

4. Release of funds

The State Government of Uttarakhand makes budgetary arrangement in the annual budget of the state. After receiving the central share, State Government releases its Share and transfers the funds in the heads of Department of Education (Primary Education). Thereafter, the State Project Directorate receives the fund and transfers the fund to the concerning districts as per their demand.

The funds are released at the different levels through the mode of PFMS (Public Financial Management System).

As soon as, the Government of India releases the Central Share then the State Government also release the State Share without delay. Within a month all the funds are transferred as Central Share and State Share to the District authority through the mode of PFMS (Public

Financial Management System). Afterwards, the District Authority forwards the fund to the school authority.

The main reason for getting delayed to release the funds at different levels is Network connectivity problem at the remote areas due to the O.F.C. (optical fibre cable) breakdown and problem in banking server.

State Government releases the funds to each and every school timely. Usually schools have the buffer stock under the head of cooking cost and food grains in case if it gets delayed in releasing funds to schools.

There is no initiative taken by the State Government for pre-positioning of funds with the implementing agencies.

5. Menu of MDM :WEEKLY MENU – DAY WISE

The day wise menu is not prepared by State Level. Orders/Instructions are issued to districts for making a weekly menu. In general, rice, pulse and vegetables based menu is practiced in maximum schools. The pulses are changed every day. The weekly menu also contains local edible items and local food habits of the children. It encourages the local farmers to sell their local products in the market.



In compliance of directions of Government of the instructions already been



the India, had issued

to all districts to utilize the Double Fortified Salt and Fortified Edible oil. The Double Fortified Salt is not available in the local market easily. Hence, best quality iodized salt is being used instead of Double Fortified Salt for preparation of food. The Fortified edible oil is a bit expensive as compared to the normal edible oil in the market. Therefore, normal edible oil is being used in the maximum number of schools.

Menu is decided by the School Management Committee according to the local food habits and easily availability of food products.

To improve the micronutrient status of children, a recipe booklet has been prepared by Home Science Department, G.B.Pant University of Agriculture & Technology,

Pantnagar named "Micronutrients Enriched Nutritious and Delicious Recipe Booklet". This booklet contains around 30 recipes based on local ingredients. These booklets made available to each and every school.

In State, The Mid Day Meal has been served in all schools in summers at 10:30am to 11:00am and in winter at 12:30pm to 01:00pm.

6. School Nutrition Gardens



Initiative has been establish “kitchen in school premises land is available.



taken to garden” where

Therefore, teachers,

cooks

and school children are motivated to produce vegetables in kitchen garden at school premises. Around 1351 Kitchen Gardens have been established as yet. (Annexure-W 1 enclosed)

Presently there is no mapping of schools with corresponding Krishi Vigyan Kendras (KVK)

In regard to this, correspondence has been made with the Forest Department, Agriculture Department and Horticulture Department to provide the Technical knowledge of kitchen garden, Manure/Compost, Seeds, Machinery of plants or agriculture, Literature related to kitchen garden and to impart the knowledge of safety from the wild animals. These vegetables are being used in schools.

The coordination will be made along with the Horticulture and Agriculture department, Uttarakhand in order to establish the kitchen gardens at schools where land is available. The concerning departments will help out for technical support, soil testing, seed quality and availability. These departments also provide the Agricultural Equipments, Fertilizers and Literature about the plantation and additional knowledge. The production of vegetables and fruits might be utilized for the children at schools.

7. **Supplementary Nutrition**

Additional food items (Atrikit Poshan) i.e. fruit, Boiled Egg, Gud Papdi etc. have been provided by the State Government from its own resources for children in all schools once in a week. The Day is decided by the convenience of district. The unit cost of above food item is Rs. 5.00 per child.

8. **Community Participation (Tithi Bhojan etc.)**

“Vishesh Bhoj” is being celebrated in various schools in Uttarakhand state. Around children in schools are availed under this programme during 2019-20. This programme is being celebrated in large number in Uttarakhand state and 63839 children are getting benefited with the additional nutrition beyond Mid Day Meal on account of “Vishesh Bhoj” programme.

9. **Monitoring Mechanism**

At the state level SLSMC headed by Chief Secretary who is monitoring the programme. Various executions made for the advancement and successful achievement of MDM through the Additional Chief Secretary, Secretary to Education Department and State Project Director, SSA including the ASPD and JD of MDM who are helping the implementation of this scheme.

At district level DLSCMC headed by District Magistrate who is monitoring the scheme. The DEO (Prim.Edu.) and other concerned including the agencies i.e. DSO, CMO & FCI meet once in a quarter. In addition, District vigilance Committee chaired by MP's also reviewing and monitoring the Scheme. At block level BLSMC headed by Sub Divisional Magistrate also monitoring the scheme along with Dy. EOs and others. At the grass root level schools have the SMC who steers and monitors the scheme.

10. **Social Audit**

Social audit has been conducted in District Haridwar and Udham Singh Nagar by “Uttarakhand Social Audit, Accountability and Transparency Agency (USAATA).

There are following findings of social audit during 2019-20:

- The eating plates are not available in some schools.
- School management committee is not supporting in schools at all.

-
- LPG connections were not available in some schools and some schools where LPG connections are available but not using gas connections for cooking.
 - In some schools MDM register, ledgers, cashbook, passbook, food taste registers and school health registers are not maintained properly.
 - Low cost of meals.
 - Low honorarium.
 - Schools are maintaining MDM registers, cashbook, ledgers etc periodically.
 - Meals are being prepared according to school menu.
 - Inculcating habit of hygiene and sanitation amongst children in schools.

Further Uttarakhand State Govt. officials has informed that 04 districts will be selected for conducting social audit of Mid Day Meal in the financial year 2020--21,

11. Testing of meals

The food sampling of 19 schools in Dehradun and Haridwar have been carried out by “Punjab Biotechnology Incubator, Mohali, Punjab” and the report is awaited from the concerning an NABL accredited facility. Thereafter, the significant report will be shared to the Ministry of human resource development, New Delhi.

There is no lab affiliated by NABL in the state, hence the testing of food samples has been carried out by other state.

Due to non availability of LAB affiliated by NABL in the State, the protocols for testing of Meals, frequency of lifting and testing of samples could not be made but in SSMC the Chief Secretary of Uttarakhand directed to increase the frequency of food sampling in State.

There are 57 samples of cooked food viz. Rice, Pulse; Vegetables have been picked from 19 Primary and Upper Primary schools. The reports are still awaited.

The instructions have been circulated to all Districts for ensuring implementation of guidelines regarding quality of the foods in accordance with prescribed norms of Mid Day Meal stated by Government of India.

12. Tasting of Meal

The Government orders are circulated to all the schools to maintain food taste register in every school and the signature of the head master, assistant teacher or other officials is compulsory before meals are served to the children at schools.

Food tasting roster is prepared and available in all schools. Parents and members of SMC are motivated for checking meal each and every day according to roster during SMCs meetings.

13. Centralized Kitchens and involvement of NGOs

The Government of Uttarakhand has decided to engage “The **Akshaya Patra**” foundation to provide Mid Day Meal in urban areas of District Dehradun, Haridwar, Nainital and U.S. Nagar through centralized kitchen. The Government orders regarding land allotment and implementation of Mid Day Meal scheme through centralized kitchen already issued. A tripartite MoU conducted between Government of Uttarakhand, The Hans foundation (fund donor) and “The Akshaya Patra” foundation and the procedure regarding establishment of centralized kitchen is on progress.

14. Cooking Competition

No. There is no cooking competition have been organized during 2019-20 but it will be processed in 08 blocks of 02 to 04 districts 2020-21.

In FY 2020-21 cooking competition will be provisioned in all districts. This competition will be organized at Block level and District level. The objective for organizing cooking competition is to include local produced edibles and awarded recipes in the competition will be introduced in prescribed weekly menu. The fund for expenditure in cooking completion has also been included in the tentative MME Plan for the financial year 2020-21.

15. Capacity Building

Different training modules are prepared by the MDM Cell, SSA and SIEMAT. Regular training programmes are arranged for strengthening of different officials as:

Different Training Modules which includes the concept of MDM

Name of Module	Module Prepared by	Prepared for	Issues Covered
Orientation Module on MDM	MDM Cell	DEO (Pry. Edu.), BEO, Dy. E.O.	Concept and Objective of MDM, Norms, Rules, Coordination with stakeholders other and other departments,
Workshop on MDM	MDM Cell	DEO (Pry. Edu.), BEO, Dy. E.O.	
Training Module- "Jagriti"	SSA	Teachers of Primary and Upper Primary level under	

		20 days in service teacher training	Nutrition, Health, Hygiene, Monitoring and supervision etc.
"Prayas"	SIEMAT	BRC and CRC	
"Prayan"	SIEMAT	BEO and Dy.E.O.	
"Prabodh"	SIEMAT	Principals	

Additionally, training is conducted in State level and District level for strengthening the mid day meal scheme of coordinators and other officials of the respective scheme.

Details about Modules used for training, Master Trainers, Venues etc.

Name of Module	Module Prepared by	Master Trainer	Venue
Orientation Module on MDM	MDM Cell	JD (MDM) & Field Investigator	SPO Meeting Hall
Workshop on MDM	MDM Cell	JD (MDM) & Field Investigator	SPO Meeting Hall
Training Module- "AAHWAN"	SAMGRA SIKSHA ABHIYAN	Senior subject teacher	BRC/CRC
"Prayas"	SIEMAT	Master Trainer of SIEMAT	SIEMAT Hall
"Prayan"	SIEMAT	Master Trainer of SIEMAT	SIEMAT Hall
"Prabodh", "Pargati Partyavadan	DIRECTOR GENERAL, SCHOOL EDUCATION		

Targets for the next year : The target for the next year is as follows:

Training Programme	Month	Participants
DyEos and BEOs training	May 2020	All DyEOs and BEOs officials.
AMS training	August 2020	Head teachers or SMC members
Training for preparation of AWP&B	January 2021	All coordinators and other Official

16. Contingency Plan to avoid any untoward incident

There are Contingency Plan to avoid any untoward incident is mentioned below :

- Government Orders are issued regarding the management, supervision, safety and tasting of food before serving to children.
- Government Orders are issued regarding hand washing before and after lunch/Tiffin.

- Hand washing campaign was launched and wide publicity of programme was done through banners, hoarding and press release.
- Government Orders are issued about safety, hygiene & security of the food grains.
- Government Orders are issued to all CMOs to check the adulteration in the food grains and other condiments available in local market.
- All important telephone numbers of nearest hospital, doctors and other officials of education department should be either painted on the walls of the Kitchen cum Store or class room.

--oOo--

PART-C : State Govt.'s Proposals and Recommendations of Appraisal Team for 2020-21

S. No.	Component	PAB Approval 2019-20	State Govt. Proposal for FY - 2020-21	Recommendations by Appraisal Team
1	Institutions			
1.1	Primary	12893	12893	12893
1.2	Upper Primary	5452	5452	5452
2	Children			
2.1	Primary	347250	345577	345577
2.2	Upper Primary	247982	241444	241444
2.3	NCLP	0	0	0
3	Working Days			
3.1	Primary	241	234	234
3.2	Upper Primary	241	234	234
3.3	NCLP	0	0	0
4	Cook cum Helper			
4.1	Primary	18777	18777	18777
4.2	Upper Primary	10410	10410	10410
5	Drought			
5.1	Children (Pry)	0	0	0
5.2	Children (U Pry)	0	0	0
5.3	Working days	0	0	0
5.4	Cook-cum-helpers	0	0	0
6	Non Recurring			
6.1	Kitchen-cum-Stores	0	0	0
6.2	Repair of kitchen-cum-stores	4788	0	0
6.3	Kitchen Devices (New)	40	68	68
6.4	Kitchen Devices (Replacement)	10394	4228 (year 2014-15)	4228 (year 2014-15)
7	Central Assistance (Rs in Lakh)			
7.1	Regular	10650.34	10499.48	10499.48
7.2	Drought	0	0	0

7.3	Kitchen cum Store	0	0	0
7.4	Repair of kitchen-cum-stores	430.92	0	0
7.5	Kitchen Devices (new)	5.81	10.04 (68 KD – New)	10.04 (68 KD – New)
7.6	Kitchen Devices (Replacement)	1102.64	424.89	424.89
7.7	Flexible Funds For School Nutrition Garden / Distribution Additional Nutrition Items	25.11	34.07	34.07
7.8	Summer Vacation Budget for FY-2020-21	--	1254.32	1254.32
7.9	Grand Total (total of 7.1 to 7.8)	12214.82	12937.85	12937.85

Appendix-1



State : UTTARAKHAND

QUANTIFICATION OF CENTRAL ASSISTANCE FOR 2020-21

A. Food grains

Sl. No.	Stage	No. of Children	Working days	Quantity (in MTs)		
				Rice	Wheat	Total
1	Primary (@ 100 gms per child per school day)	345577	234	8086.50	0.00	8086.50
2	U. Primary (@150 gms per child per school day)	241444	234	8474.68	0.00	8474.68
3	NCLP (@150 gms per child per school day)	0	0	0	0	0
4	Drought					
4.1	Primary	0	0	0	0	0
4.2	Upper Primary	0	0	0	0	0
TOTAL		587021	234	71.25	16489.93	16561.19

B. Cost of Food-grains, Cooking cost, Transport Assistance, Honorarium to Cook-Cum-Helpers and Management Monitoring and Evaluation (MME)

Sl. No.	Component/norm	Amount admissible (Rs. in lakh)
1	2	3
Primary		
1	Cost of Food grains for 8086.50 MTs ((for Wheat 0.00 MT @2000 per MTs) + (8086.50 MT Rice @3000/- per MT) + 2.5% Mandi tax	248.66
2	Unit Cooking Cost- Rs. 4.97/- per child per day	
2.1	Central Share @ Rs. 4.47/-per child per day for 345577 Children	3614.67

2.2	Minimum Mandatory State Share @ Rs 0.50/- per child per day for 345577 Children	404.33
3	Transportation Cost @ Rs.2516.49 /- Per MT food grains for 8086.50 MTs	203.50
4	Honorarium for cook cum Helper	
4.1	Central Share - @ Rs 900/- for 10 months) for 18777 Cook-cum-Helpers	1689.93
4.2	State Share - @ Rs 100/- for 10 months) for 18777 Cook-cum-Helpers	187.77
5	Management Monitoring and Evaluation (MME) @ 2.7% of the i) Cost of food grains ii) Cooking cost iii) Cost of transportation and iv) Honorarium to cook – cum-helpers	155.43
Total Central Share for Primary		5912.18
Upper Primary		
6	Cost of Food grains for 8474.684 MTs ((for Wheat 0.00 MT @2000 per MTs) + (8474.68 MT Rice @3000/- per MT) + 2.5% Mandi tax	260.60
7	Unit Cooking Cost- Rs. 7.45/- per child per day	
7.1	Central share @ Rs. 6.70/- per child per day for 241444 Children	3785.36
7.2	Minimum Mandatory State Share @ Rs.0.75/- per child per day for 241444 Children	423.73
8	Transportation Cost @ Rs.2516.49 /- Per MT food grains for 8474.684 MTs	213.26
9	Honorarium for cook cum Helper	
9.1	Central Share - @ Rs 900/- for 10 months) for 10410 Cook-cum-Helpers	936.90
9.2	State Share - @ Rs 100/- for 10 months) for 10410 Cook-cum-Helpers	104.10
10	Management Monitoring and Evaluation (MME) @ 2.7% of the 1) Cost of food grains 2) Cooking cost 3) Cost of transportation and 4) Honorarium to cook – cum-helpers	140.30
Total Central Share for Upper Primary		5336.42
NCLP		
11	Cost of Food grains @ Rs. 3000 per MT for rice and Rs 2000 per MT for wheat	
12	Unit Cooking Cost- Rs. per child per day	
12.1	Central share @ Rs. per child per day	
12.2	Minimum Mandatory State Share @Rs. per child per day	
12.3	Transportation cost @ Rs. Per MT food grains	
12.4	Management Monitoring and Evaluation (MME) @2.7% of the 1) Cost of food grains 2) Cooking cost and 3) Cost of transportation	

Total Central Share for NCLP	0
Total of Central Share (Primary + Upper Primary + NCLP)	11248.60

C. Drought :

Sl. No.	Component/norm	Amount admissible
		(Rs. in lakh)
1	2	3
Primary		
1	Cost of Food grains @ Rs. 3000 per MT for rice and Rs 2000 per MT for wheat	
2	Unit Cooking Cost- Rs. per child per day	
2.1	Central Share @ Rs. per child per day	
2.2	Minimum Mandatory State Share @ Rs. per child per day	
3	Transportation Cost @ Rs. Per MT food grains	
4	Honorarium for cook cum Helper	
4.1	Central Share - @ Rs. for 2 months)	
4.2	State Share - @ Rs. For 2 months)	
5	Management Monitoring and Evaluation (MME) @2.7% of the i) Cost of food grains ii) Cooking cost iii) Cost of transportation and iv) Honorarium to cook – cum-helpers	
Total Central Share for Primary (Drought)		0.00
Upper Primary		
6	Cost of Food grains @ Rs. 3000 per MT for rice and Rs 2000 per MT for wheat	
7	Unit Cooking Cost- Rs. per child per day	
7.1	Central share @ Rs. per child per day	
7.2	Minimum Mandatory State Share @ Rs. 2.60 per child per day	
8	Transportation cost @ Rs. Per MT food grains	
9	Honorarium for cook cum Helper (included in primary)	
9.1	Central Share - @ Rs. for ... months)	
9.2	State Share - @ Rs. for ... months)	

10	Management Monitoring and Evaluation (MME) @ 2.7% of the 1) Cost of food grains 2) Cooking cost 3) Cost of transportation and 4) Honorarium to cook – cum-helpers	
Total Central Share for Upper Primary (Drought)		0.00
Total Primary + Upper Primary (Drought)		0.00

D. Non-recurring

Sl. No.	Component	Amount admissible (Rs in Lakh)
1	Kitchen-cum-store	Nil
2	Repair of kitchen-cum-store – Nil	Nil
3	Kitchen Devices (New) for 68 – KD New	10.04
4	Kitchen Devices (Replacement – for 4228 KD for the Year 2014-15)	424.89
Total Central Share (Non-recurring)		434.925
Flexible funds for New Interventions (For School Nutrition Garden / Additional Nutritional Items etc.)		
5	757 - School Nutrition Garden @Rs.5000/- per school	34.07
Total Central Share (Non-recurring) (Except Flexible Funds)		434.93

Uttarakhand -- MDM Additional Proposal for Summer vacation during 2020-21

Requirement of Additional Funds and foodgrains for provision of MDM during Summer Vacation in 2020-21										
Name of State : Uttarakhand										
Stage	Number of children	Number of days	Foodgrains (In Mts)	Cost of Foodgrains (Rs. in Lakh)	Cooking Cost -- Central Share (Rs. In Lakh)	Cooking Cost -- State Share (Rs. In Lakh)	Cooking Cost -- Total (Rs. In Lakh)	Transportation Assistance (In Lakh)	Total Amount - Centre Share	Total Amount - State Share
Primary	405009	30	1215.03	37.36	543.12	60.75	603.87	30.58	611.06	60.75
Upper Primary	284428	30	1279.93	39.36	571.70	64.00	635.70	32.21	643.27	64.00
Total			2494.95	76.72	114.82	124.75	1239.56	62.79	1254.32	124.75
Note:- (i)										
(ii)										

E. Total Requirement of Funds for FY - 2020-21

(Rs. in lakh)

Component		Centre Share	Minimum Mandatory State Share
Recurring	Normal	11248.60	1119.93
	Drought	--	--
Non- recurring		434.93	48.32
Summer Vacation Budget		1254.32	124.75
Grand Total		12937.85	1293.00
